

# SPEC SHEET + MEASUREMENTS

PORT AUTHORITY.

Port Authority® Active Hooded Soft Shell Jacket. J719

## Product photo



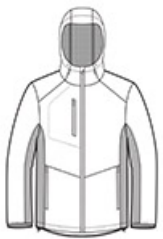
Enjoy active pursuits in this flexible, wind-resistant, water-resistant, budget-friendly jacket that features a hood for true all-season performance.

- 100% polyester knit shell bonded to a water-resistant film insert and a 100% polyester mesh interior
- 1000MM fabric waterproof rating
- 1000G/M<sup>2</sup> fabric breathability rating
- Three-panel hood with adjustable locking drawcord
- Reverse coil center front zipper
- Zippered chest pocket
- Front zippered pockets
- Elastic binding at cuffs
- Open hem with adjustable locking drawcord

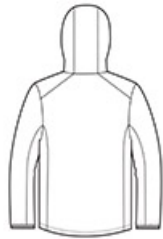
## CARE INSTRUCTIONS

Machine wash cold. Gentle cycle. Tumble dry low. Cool iron if needed. Do not bleach. Do not dry clean.

## Sketches



front



back

# SPEC SHEET + MEASUREMENTS

PORT AUTHORITY

Port Authority® Active Hooded Soft Shell Jacket. J719

## PRODUCT MEASUREMENTS

	XS	S	M	L	XL	2XL	3XL	4XL
Chest	19 1/2	21	22 1/2	24	25 1/2	27	29	31
Body Length at Back	28	29	30	31	32	33	33 1/2	34
Sleeve Length from Center Back	35 1/4	36	36 3/4	37 1/2	38 1/4	39	39 3/4	40 1/2

**Chest:** Measured across the chest one inch below armhole when laid flat.

**Body Length at Back:** Measured from high point shoulder to finished hem at back.

**Sleeve Length from Center Back:** Measure from Center Back neck to shoulder point to sleeve hem.

## SIZE CHARTS

	XS	S	M	L	XL	2XL	3XL	4XL
Chest	32-34	35-37	38-40	41-43	44-46	47-49	50-53	54-57

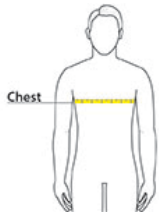
# SPEC SHEET + MEASUREMENTS

PORT AUTHORITY.

Port Authority® Active Hooded Soft Shell Jacket. J719

## HOW TO MEASURE

---



### CHEST

Measure under the arm and around the fullest part of the chest with arms down, keeping tape horizontal.

## COLORS

---



Deep Black  
PMS BLACK  
C



Dress Blue  
Navy  
PMS 533C



Grey Steel/  
Deep Black  
PMS 7540 C



True Royal/  
Deep Black  
PMS 7687 C